



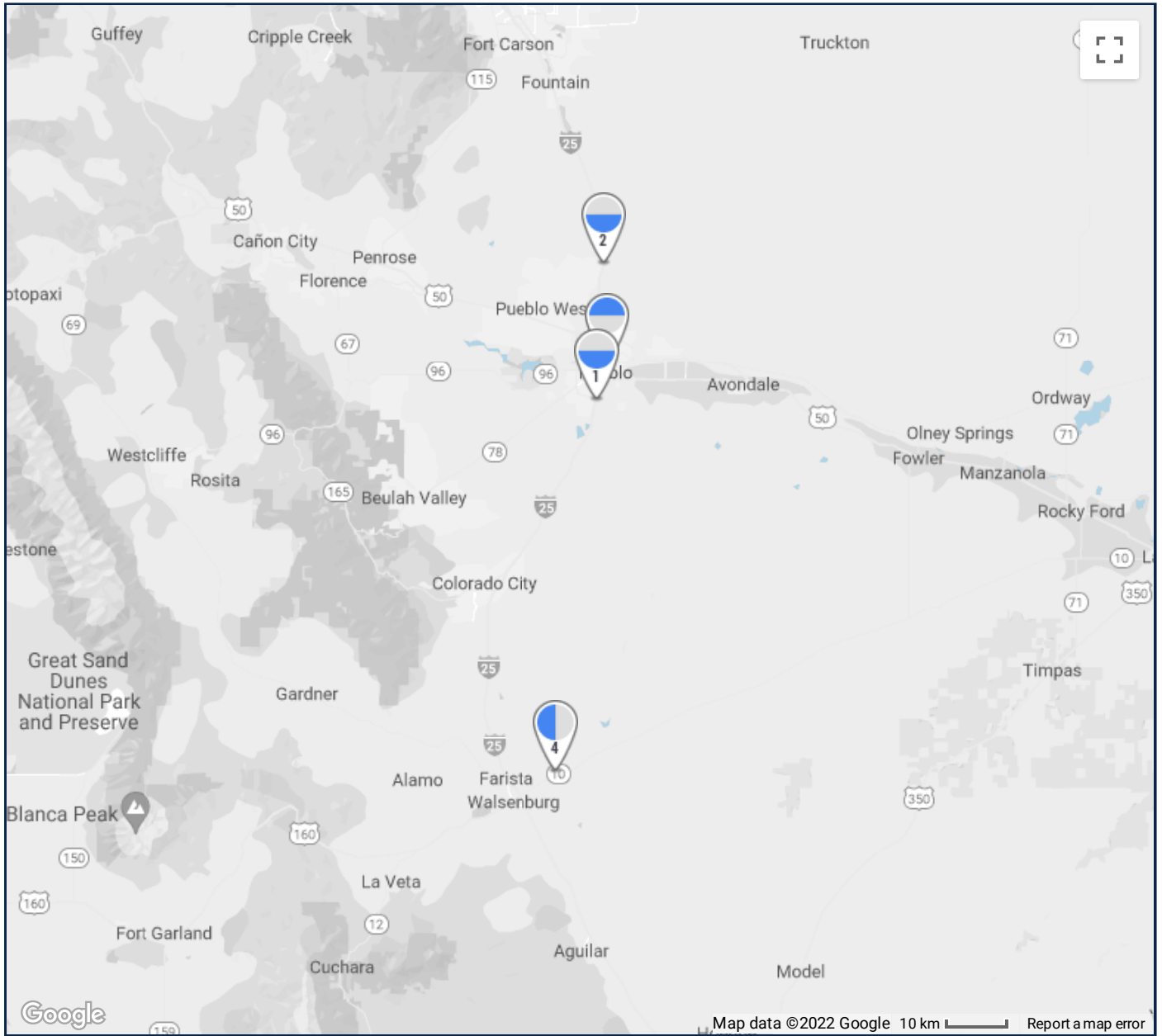
Johnny's Ambassadors

Laura Stack

Laura@JohnnysAmbassadors.org
(303) 471-7401

Tim Small | Sr. Account Executive

tim@milehighoutdoor.com | 303.783.4800 | 303.783.4801 (fax)
9250 E. Costilla Ave., Suite #500, Greenwood Village, CO 80112



 Bulletin

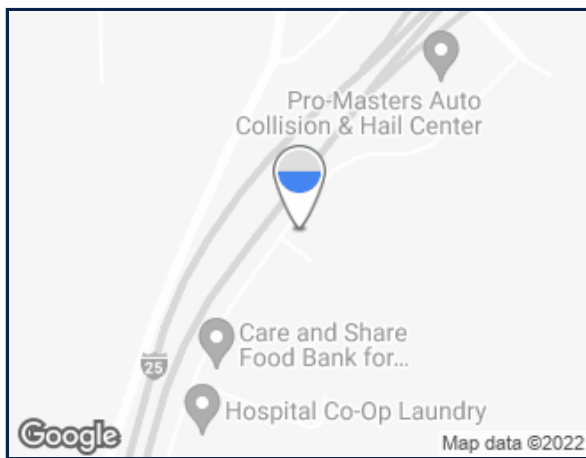
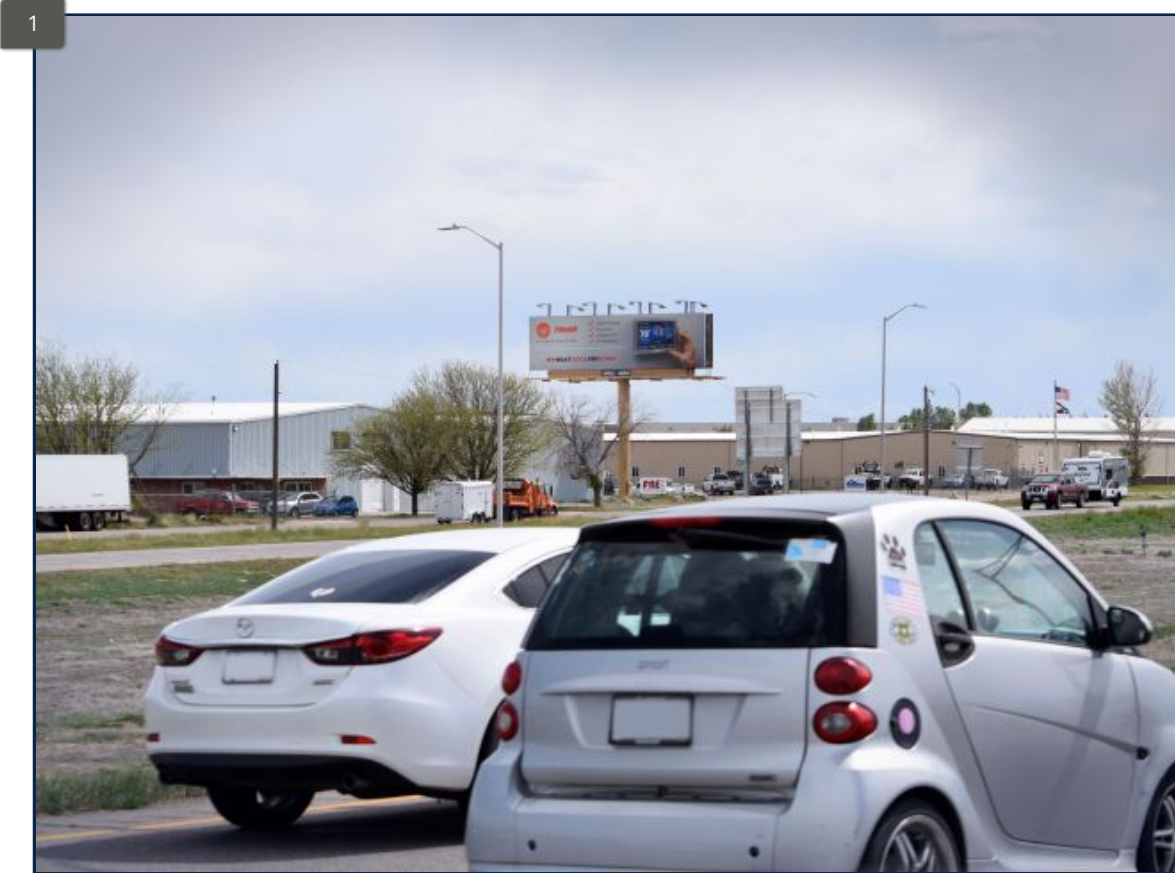
Face ID	Market	Facing	Read	Size	Illum	Weekly	Rate	Start	End	Icon
1 02-2185 (Bulletin) E/L I-25, 0.20 mi S/O Pueblo Blvd, N/F [Geopath#: 30764183]	Pueblo	North	CR	14' x 48'	Yes	29.3K† (38.2124/-104.6249)	\$2000.00	11/07/22	01/08/23	
2 04-4052 (Bulletin) E/L I-25 s/o Pinon (MM 109) N/F [Geopath#: 30614290]	Pueblo	North	CR	12' x 36'	Yes	30.5K† (38.4123/-104.6124)	\$1500.00	10/31/22	01/08/23	
3 04-4059 (Bulletin) W/L I-25 s/o City Center Drive - Pueblo, S/F [Geopath#: 30614295]	Pueblo	South	CR	10'6 x 36'	Yes	221.4K† (38.2634/-104.6058)	\$1500.00	11/21/22	01/08/23	
4 04-4112 (Bulletin) US Hwy 10 N/S, 4.00 mi E/O I 25 (Walsenburg), E/F [Geopath#: 30764191]	Pueblo	East	RR	5'6 x 7'6	No	20.4K† (37.6632/-104.7036)	\$300.00	09/26/22	01/08/23	

TERMS	NOTES
	† Weekly impressions for individuals 18+ years old according to Geopath. The Geopath Audience Location Measurement SM data is provided by GeoPath, Inc. New York, New York. ©Copyright 2022, All Rights Reserved.



Tim Small | Sr. Account Executive
 tim@milehighoutdoor.com | 303.783.4800 | 303.783.4801 (fax)
 9250 E. Costilla Ave., Suite #500, Greenwood Village, CO 80112

E/L I-25, 0.20 mi S/O Pueblo Blvd, N/F



Illuminated Bulletin

Pueblo

Facing North (CR)

Latitude/Longitude: 38.2124/-104.6249

Bulletin Face Size: 14' x 48'

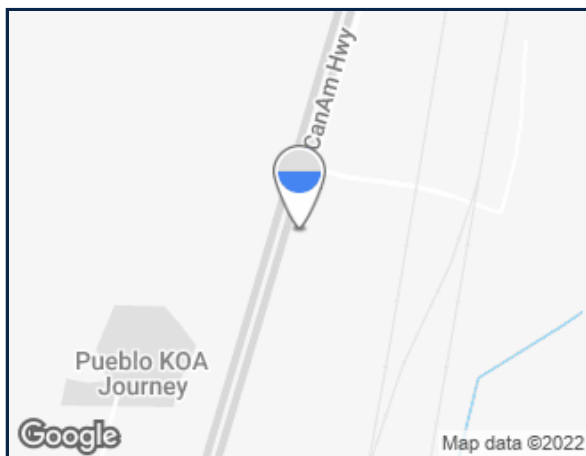
Geopath ID#: 30764183 Geopath Weekly Impressions 18+: 29,286

\$2000.00 / 4 Week Period (Rate is based on 2.25 4-Week periods.)

Nice long LHR just south of Pueblo reaching traffic heading to Trinidad and New Mexico.

E/L I-25 s/o Pinon (MM 109) N/F

2



Illuminated Bulletin

Pueblo

Facing North (CR)

Latitude/Longitude: 38.4123/-104.6124

Bulletin Face Size: 12' x 36'

Geopath ID#: 30614290 Geopath Weekly Impressions 18+: 30,496

\$1500.00 / 4 Week Period (Rate is based on 2.5 4-Week periods.)

Left hand read targeting south bound traffic headed into Pueblo, just north of City Limits. Targets travelers from Fountain and Colorado Springs area.

W/L I-25 s/o City Center Drive - Pueblo, S/F



3



Illuminated Bulletin

Pueblo

Facing South (CR)

Latitude/Longitude: 38.2634/-104.6058

Bulletin Face Size: 10'6 x 36'

Geopath ID#: 30614295 Geopath Weekly Impressions 18+: 221,449

\$1500.00 / 4 Week Period (Rate is based on 1.75 4-Week periods.)

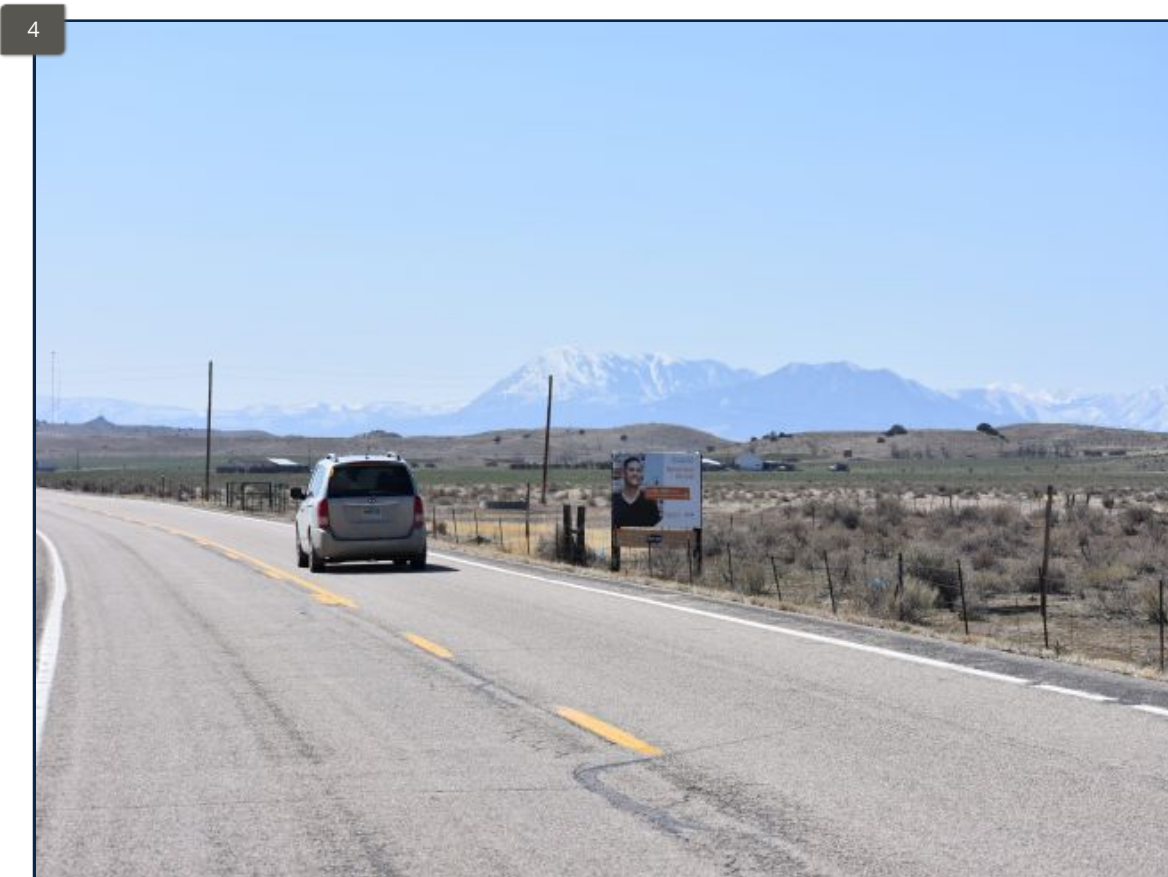
Bulletin is an excellent left hand read with a long approach, targeting northbound traffic headed away into downtown Pueblo. Stand out location in the heart of Pueblo.



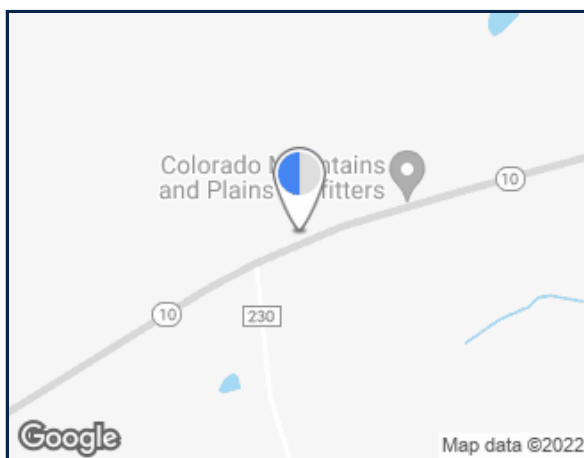
Tim Small | Sr. Account Executive

tim@milehighoutdoor.com | 303.783.4800 | 303.783.4801 (fax)
9250 E. Costilla Ave., Suite #500, Greenwood Village, CO 80112

US Hwy 10 N/S, 4.00 mi E/O I 25 (Walsenburg), E/F



4



Bulletin

Walsenburg

Facing East (RR)

Latitude/Longitude: 37.6632/-104.7036

Bulletin Face Size: 5'6 x 7'6

Geopath ID#: 30764191 Geopath Weekly Impressions 18+: 20,355

\$300.00 / 4 Week Period (Rate is based on 3.75 4-Week periods.)